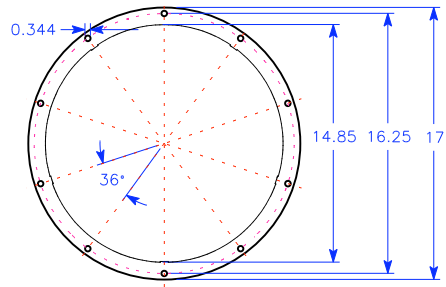


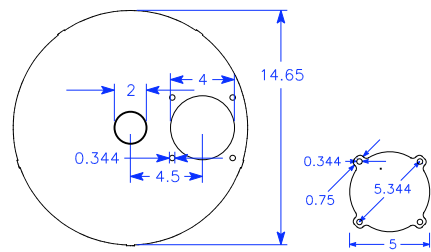
# GEK Flange Rings and End Plates v2.0

(Cut from 1/8" mild steel sheet)

## Gas Cowling

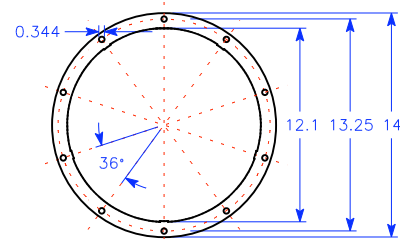


Top Rim Flange

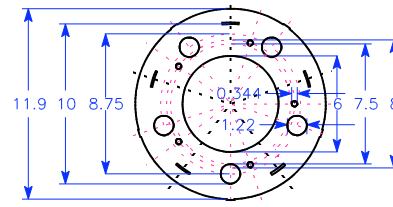


Bottom End Plate  
(with grate rotation, air inlet and ash port holes)

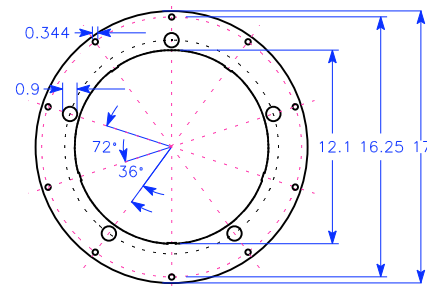
## Downdraft Reactor



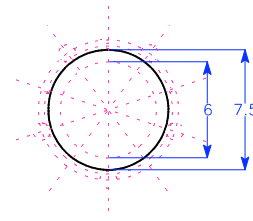
Top Rim Flange



Bottom End Plate

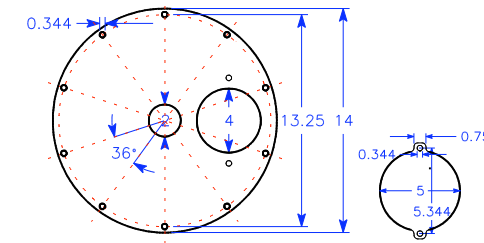


Perimeter Mounting Flange

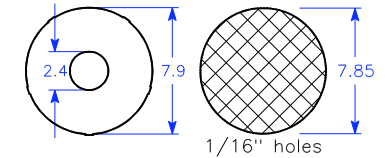
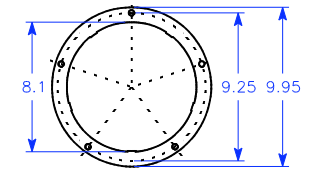


Reduction Bell End Plate  
(cut center to desired size)

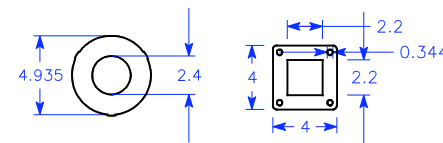
## Hopper, Filter, Cyclone, Fan, Burner, Grate



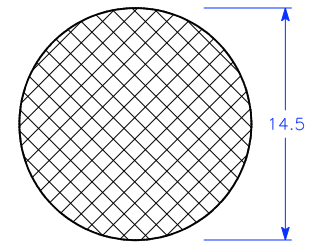
Top Cover for Reactor or Hopper  
(holes for fuel fill and top down air config)



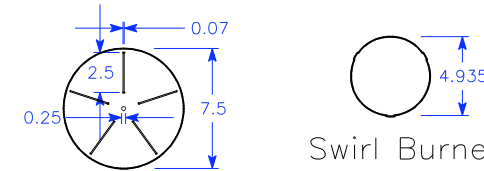
Filter and Mesh  
1/16" holes



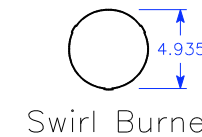
Cyclone Top and Mount



Ash Grate  
1/8" thick  
3/16" holes



Fan Rotor



Swirl Burner

Before building, check for more recent versions at: [www.allpowerlabs.org/gasification/gek](http://www.allpowerlabs.org/gasification/gek)  
ALL Power Labs 1010 Murray Street Berkeley, CA 94710. 3/09. jim@allpowerlabs.org